

HIGH JEWELLERY COLLECTION

**LE CHŒUR  
DES PIERRES**

*Cartier*



**AT CARTIER, EVERYTHING STARTS WITH THE STONE.**

When you see a 'Cartier stone' for the first time, you know. Recognising one among other exceptional gemstones is a question of intuition, guided by the emotion it provokes.

In addition to the most demanding quality criteria – measuring a unique and singular combination of purity of material, elegance of cut and precision of proportions – there is that certain *je ne sais quoi* so dear to Cartier, which gives the Maison's stones a distinct personality and sets them apart.

**LIKE A MUSE, THEREFORE, THE STONE GUIDES THE CREATION.**

Through its shape, colour, history and symbolism, it is the starting point from which designers and artisans draw inspiration. It is the stone that sits in front of the designer as a jewellery piece is created.

Through the design, the gemstones are given a platform to express themselves. Each stone, with its unexpected colour combinations, plays of light and contrast, volume, and structure, guides the composition, allowing the Cartier style to come to life in all its diversity.

Like an orchestra conductor, Cartier harmonises the precious and fine materials such that they resonate in perfect unison.

The whole is enhanced by the savoir-faire of the Maison's artisans, including stone experts, jewellers, lapidaries, gem-setters and polishers, who work in unison with one another to create the perfect harmony. From the first stroke of the pencil to the finished piece, the designer is constantly communicating with each artisan as part of a reciprocal understanding of the other's craft. This continuous dialogue enables them to move forward together and push their own limits, allowing the Cartier style to shine with all its richness.

**CARTIER HIGH JEWELLERY IS AN ODE TO GEMSTONES.**

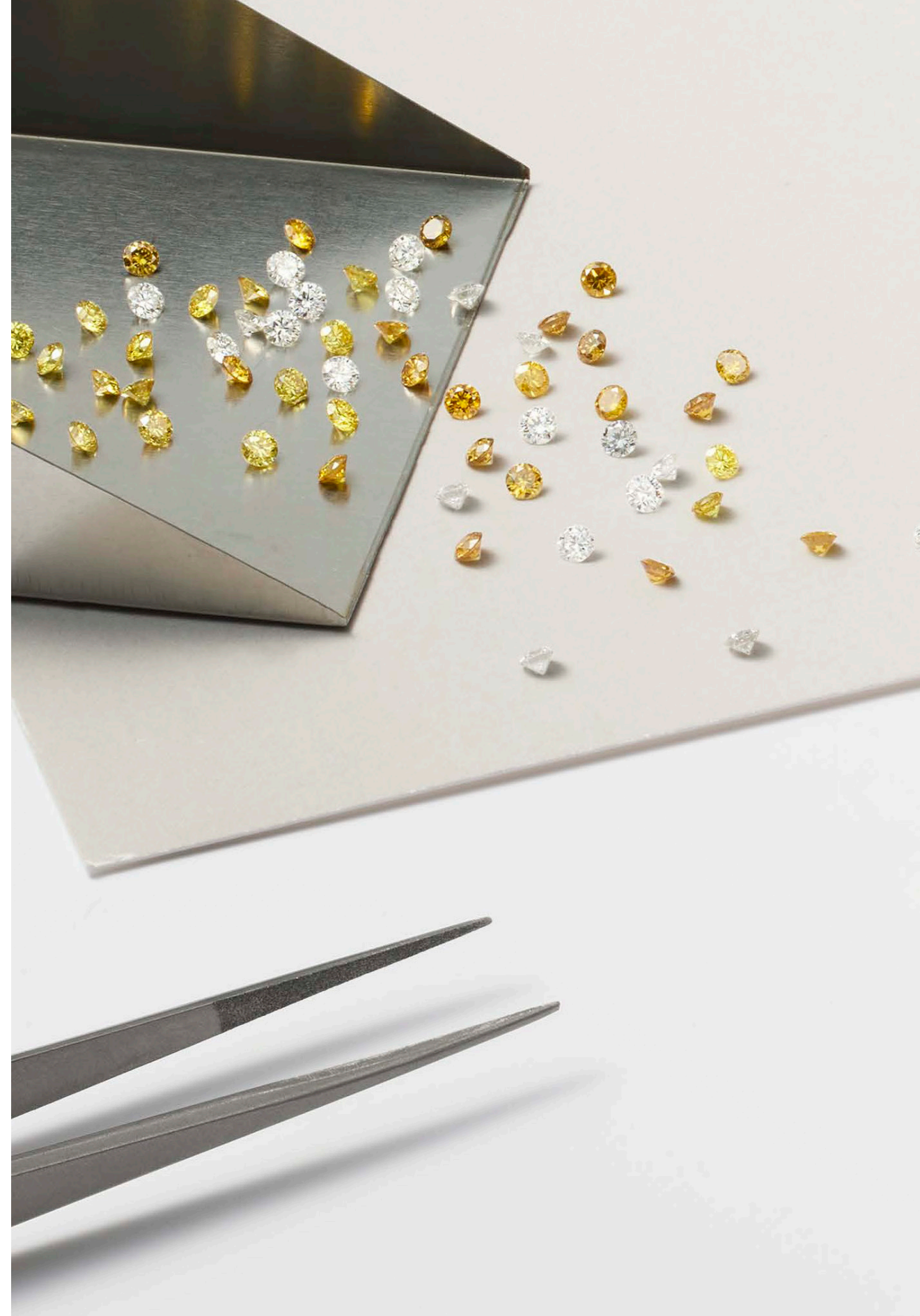


“Letting a stone speak is to recognise in it a memory of the world, a beauty shaped by time and imbued with eternity.

Each gemstone is an encounter, an alchemy that resonates with our vision and our quest for the Cartier ideal. The creation serves the stone, revealing its nuances, its brilliance, its sparkle and its inner vibration.

That is where the jeweller’s work lies: to be moved, to interpret and magnify the stone’s unique soul, its presence.”

**JACQUELINE KARACHI-LANGANE**  
**DIRECTOR OF HIGH JEWELLERY CREATION**



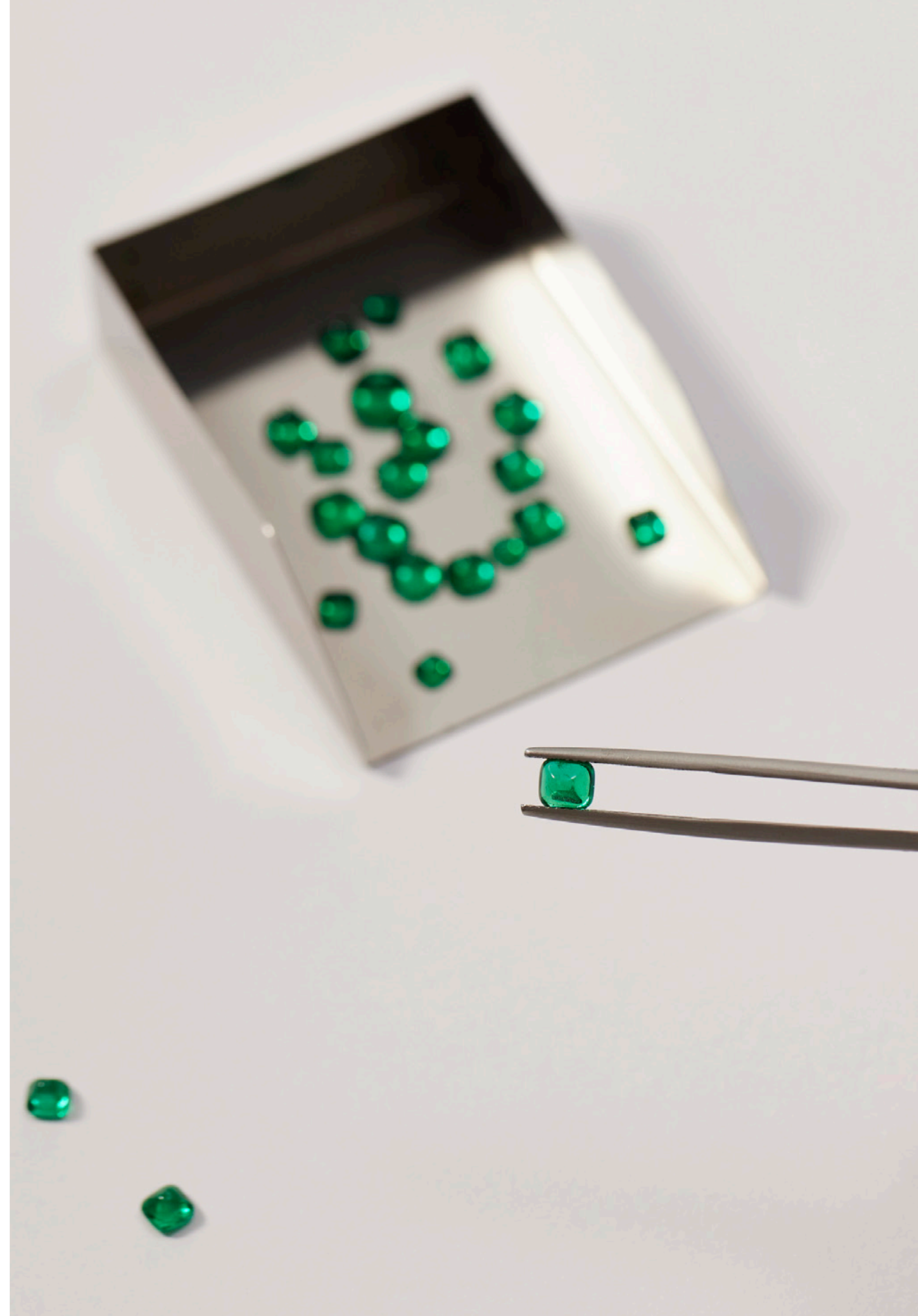


“This collection is an ode to gemstones, a dazzling symphony in which each gem sings its own melody. This first chapter, the work of Cartier’s expert artisans, comprises more than 125 unique pieces and required more than 85,000 hours of passionate work. Technical and aesthetic excellence unite all the crafts in our workshops, transforming materials into timeless pieces that blend beauty and expertise harmoniously.”

**ALEXA ABITBOL**  
**DIRECTOR OF THE HIGH JEWELLERY WORKSHOPS**

“Le Chœur des Pierres’ plays on two different meanings evoked by the pronunciation of “chœur” in French. When written this way, it refers to the chorus of voices; without the ‘h’, it signifies the heart. Pronounced identically but with two different meanings, ‘chœur’ and ‘cœur’ both express how Cartier selects gems and designs pieces to enhance them. They represent how the designs draw on the very essence of each stone to reveal their unique and fascinating character, and how the jeweller combines materials in powerful colour compositions. This distinctive vision of High Jewellery, emblematic of Cartier’s style, is realised fully at the service of gemstones.”

**PIERRE RAINERO**  
**DIRECTOR OF IMAGE, STYLE AND HERITAGE.**





**OLORRA**

---



## OLORRA

**T**he intense colour of these five Colombian emeralds, weighing a total of 40.67 carats, determined the structure of this necklace. Through its radiant design motif, it offers a unique interpretation of the iconic green-blue contrast that first appeared at Cartier in the early 20th century. Custom-cut turquoise and lapis lazuli stones alternate with diamonds to form geometric pendants, lending rhythm to this radial architecture. Adding to the effect is a multitude of small elements around the neck and motifs which, together, create a veritable visual symphony, a chorus of gemstones both rhythmic and graphic.

**SOLENARA**

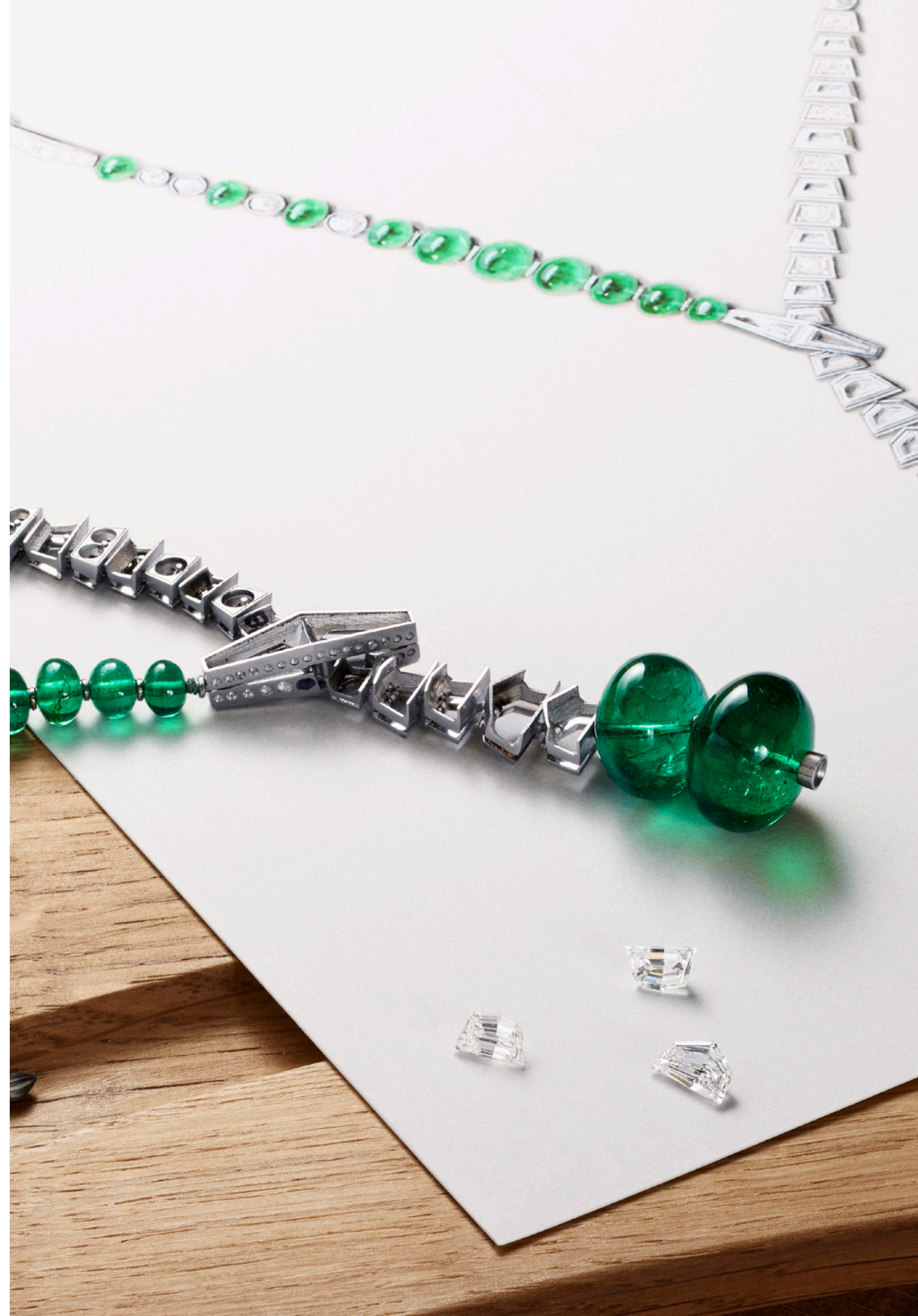




## SOLENARA



**T**his design began with the two emeralds, remarkable for their size and shape. They are at one end of a precious line of gemstones that celebrates the Maison's taste for classic design, a simplicity that is one of the hallmarks of Cartier High Jewellery. Each emerald resonates with its own intensity: hanging flush together, their organic roundness contrasts with the geometry of the diamonds. The asymmetrical elements of the composition provide visual balance, and the end result exudes fluidity and graphic clarity reminiscent of a subtle *legato*.






**TELLURA**

---



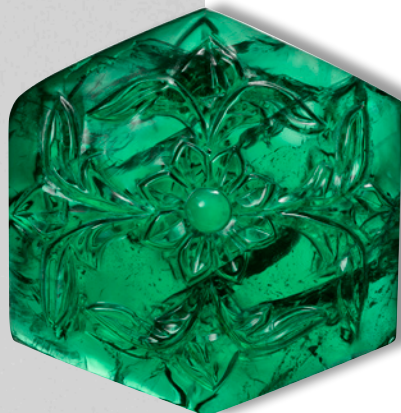
## TELLURA

**E**ach stone is unique, presenting its own challenge to Cartier's artisans, who pushed the boundaries of their expertise in order to celebrate its beauty. The unique shapes of these 30 diamonds inspired this original composition, a sculptural piece of jewellery that tells the story of a fascinating stone and the volcanic eruption that preceded its birth. The designer conceived this necklace in collaboration with master jewellers, enabling its scattering of motifs from which the gems are suspended. The interplay of volumes with alternating pavé scrolls and openwork creates an impression of continuous movement: a dazzling feat bringing together different forms of expertise in pursuit of excellence.



**TUTTI KANYA**

---



## TUTTI KANYA

The highlight of this choral creation is an imposing 30.33-carat engraved emerald from Zambia. All around it, flowers, leaves and berries carved from rubies, sapphires and emeralds bloom in corollas.

A true celebration of nature and its luxuriance, this necklace relies on an elementary colour scheme. Each colour – red, green and blue – has its own voice and blends with the others in perfect harmony. Its construction emphasises precision as much as balance, which is also reflected in the exuberant volumes and in the ruby tassel. Created using the stringing technique, it can be placed at the back or positioned at the front when the main motif is worn as a brooch. A detail of ultimate refinement, the underside of the necklace reveals a precious metal tree.

This necklace renews the Tutti Frutti style, which has been part of the Maison's repertoire since the mid-1920s.





**PYRA**

—



**PYRA**



**A** contemporary interpretation of an early 20th-century tiara, this earring is an ode to the Maison's expertise. Imagine a piece of jewellery that scatters moving diamonds like raindrops through the wearer's hair: this was the challenge taken up by Cartier's artisans, who were working with 6.85 carats of orange diamonds and white diamonds. Movement leaps from the slender pavé lines, and their resonance sets them alight. A surprisingly versatile piece, this earring can be transformed into a brooch or hair accessory – an iconic feature of Cartier's tradition of modular jewellery.



**HARYMA**

---



## HARYMA



**W**hile the Panther is the undisputed queen of Cartier fauna, the tiger is no less a mainstay. To celebrate this worthy companion, the Maison’s jewellers have assembled five exceptional imperial topazes weighing 28.04 carats, as well as garnets and white, yellow, and orange diamonds.

Their intense colour gave rise to this necklace, which exalts the Maison’s style. The staircase arrangement of the topazes creates a dynamic effect. Strikingly realistic, as if in motion, the big cat seems to move silently across this gemstone floor. Its anatomy is accurately rendered by remarkable sculpting and jewellery work. The richness of the colour palette enhances the sense of vitality that emanates from the piece. On the “pixelated” chain, custom-cut onyx stones echo the pattern of the tiger’s coat, lending visual continuity to the design. With its fully articulated construction, the necklace rests as close as possible to the neck.

Cartier



POIDS  
en CARATS





**PANTHÈRE  
KENTIA**

—



## PANTHÈRE KENTIA

The panther, who has been Cartier's muse since her first appearance in 1914, revels in the aura of the distinctive gemstones that adorn the Maison's High Jewellery pieces. Cartier used this 50.13-carat cabochon-cut Ceylon sapphire as the centre stone for this necklace, which combines elegant design with meticulous craftsmanship. Playing on the contrast between the organic shape of the cabochons and the geometric lines of the necklace, the designer created a wave of stylised, three-dimensional motifs with botanical accents on the inner edge. Spaced evenly apart, these motifs extend towards the outer edge of the necklace, ending with small sapphire cabochons. The panther's presence balances the tension between curves and graphic lines. Reflecting the Maison's naturalistic vision, she is rendered as a three-dimensional sculpture with piercing emerald eyes and custom-cut onyx markings. The necklace is fully articulated for greater comfort when worn.





# RINGS

---

EIGHT RINGS IN TOTAL, EIGHT STONES WHOSE BRILLIANCE,  
COLOUR AND SHAPE HAVE INSPIRED DESIGNERS AND ARTISANS.  
THESE UNIQUE GEMS OPEN UP NEW TERRITORIES OF CRAFTSMANSHIP  
AND STYLE, BURSTING WITH CREATIVITY.



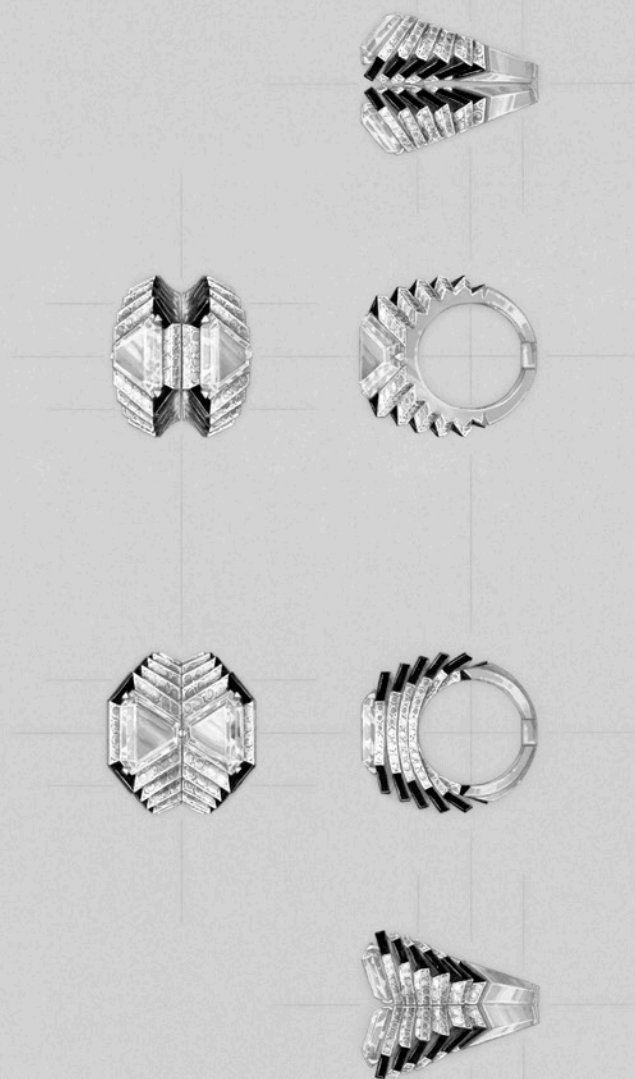


**SPECULA**

---



## SPECULA



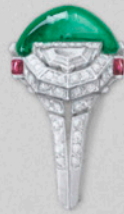
One ring, two ways to wear it. With its pair of exceptional triangular diamonds weighing a total of 6.44 carats, Cartier is shaking up the status quo by offering an original interpretation of the classic *Toi & Moi*. The modular structure of the piece celebrates these unique cuts. The ingenuity of its architectural design is based on a bold concept in which the larger ring is made of two smaller rings. When the points of the diamonds face each other, the composition unfolds into a series of staircase chevrons. When the points are facing away, the volume reverses and seems to gradually open up around the stones. The onyx accents enhance the piece's overall visual strength. This mirrored construction is made possible by the excellence of Cartier's workshops.

**TETRAYA**

—



## TETRAYA



**T**he desire to amplify the deep colour and spectacular volume of this 20.24-carat sugarloaf-cut Colombian emerald is what inspired the jewellery work and fine detail. In tribute to one of the Maison's iconic designs, the stone is framed on either side by two modified shield-cut diamonds. Their geometric shape echoes the triangular facets of the emerald and contrasts with its organic relief. A border of 18 calibre-cut rubies completes the piece. They highlight the ring's construction as well as the centre stone and celebrate the green and red colour combination that has been part of Cartier's repertoire for over a century.



**STRATELIA**

---



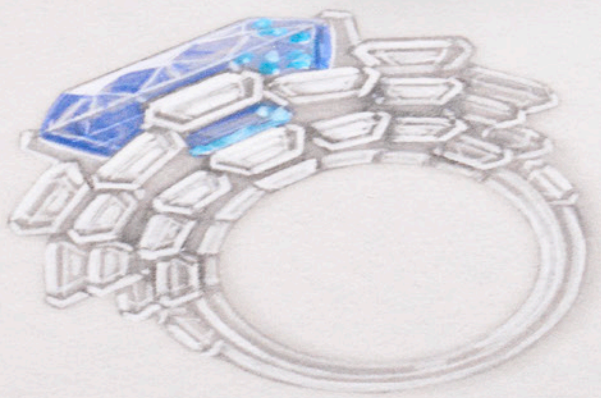
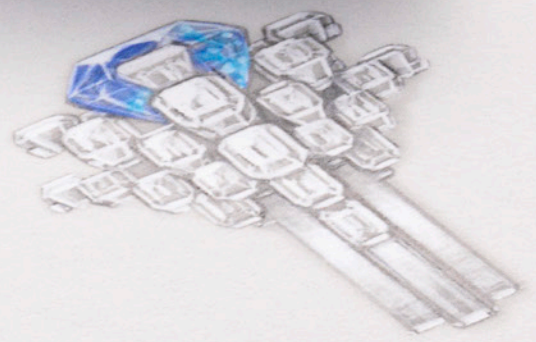
## STRATELIA



**G**aze into the depths of this 23.35-carat Madagascan cushion-cut sapphire and let your imagination run wild... This ring celebrates the sky and its clouds with its centre stone. Abstract and graphic, the piece has a faceted architecture, illuminated by emerald-cut diamonds spread across different levels. Through these plays of light, the sapphire's exposed pavilion shines through, creating an impression of lightness and weightlessness. A sculpture of light is born.



CARTIER  
PARIS  
LONDRES  
NEW YORK  
DROUOT REIMS





**TESSELIA**

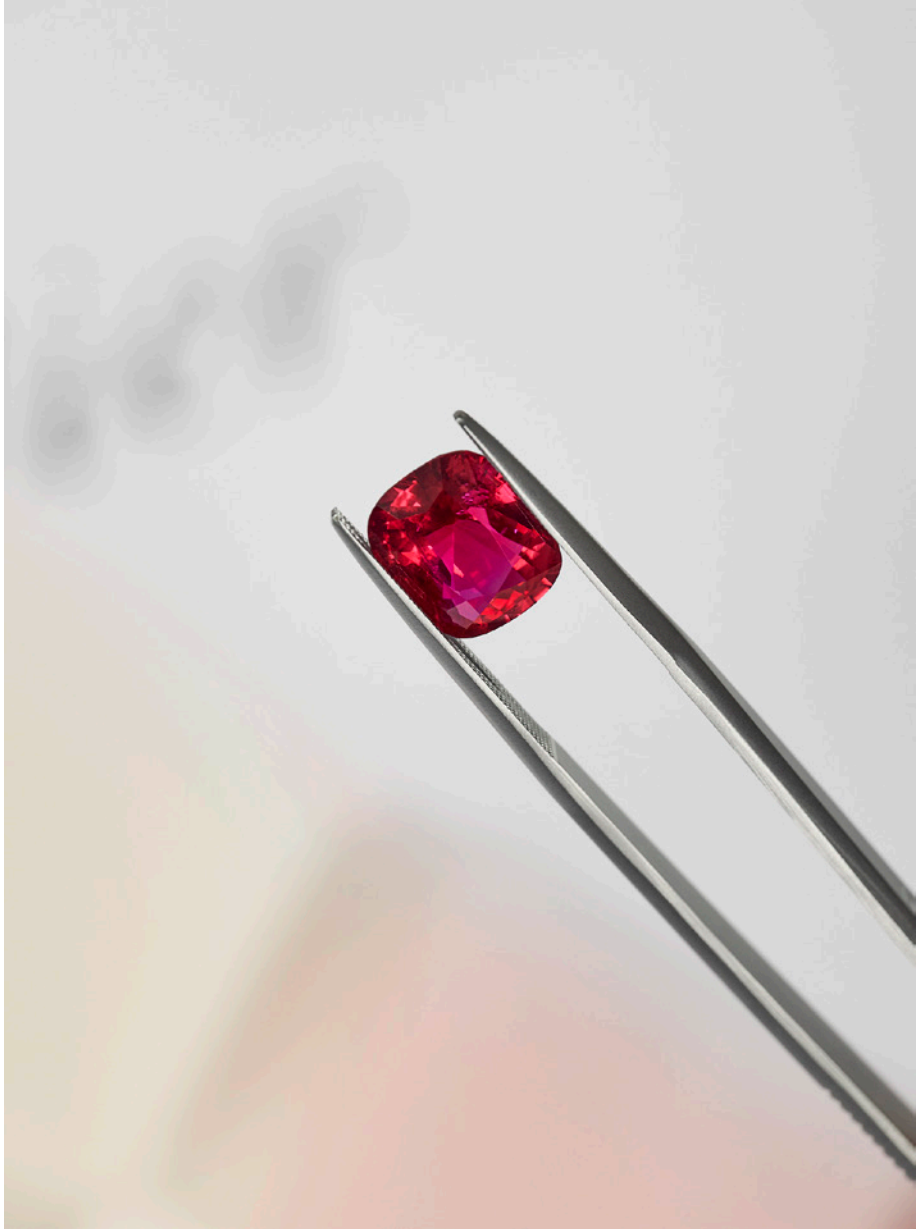


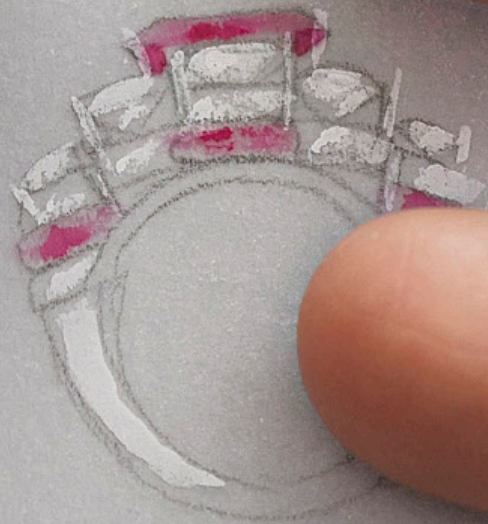
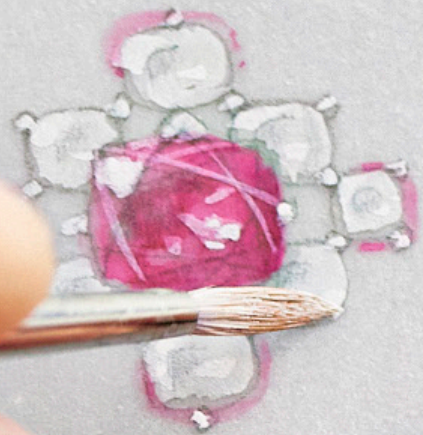
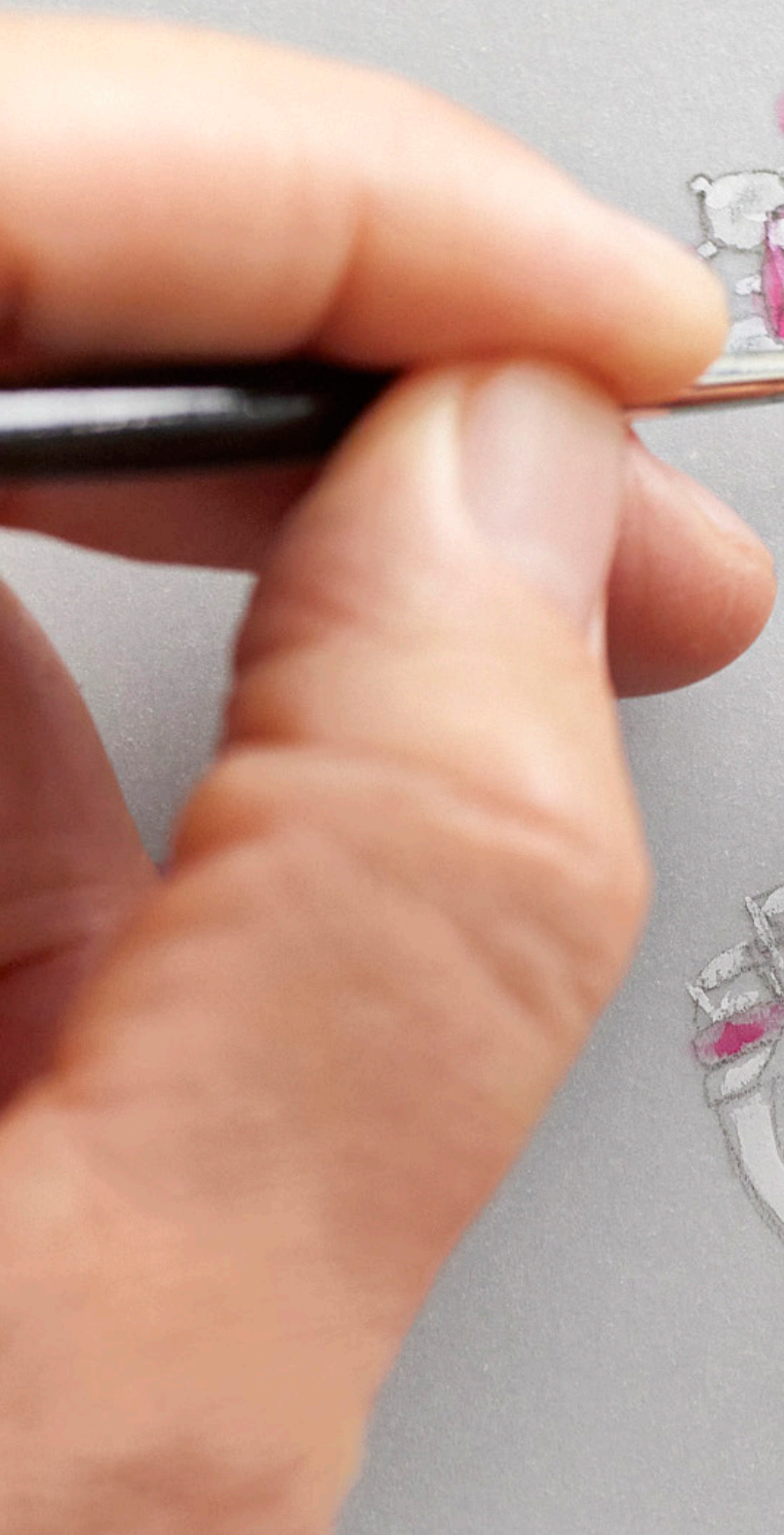


## TESSELIA



**A**t the centre of this ring sparkles a dazzling 5.24-carat ruby from Mozambique. Its deep red colour with a hint of orange – characteristic of its origin – and its cushion cut define the spirit of this striking platinum piece. In a highly refined composition, the setting unfolds like a flower’s corolla around eight cushion-cut diamonds, with openwork of the same shape. Custom-cut ruby accents emphasise the volume and unite all the elements together in harmony. Between fullness and emptiness, shadow and light, the structure of the entire piece amplifies the central stone’s brilliance, its flamboyant red colour and the beauty of its transparency.

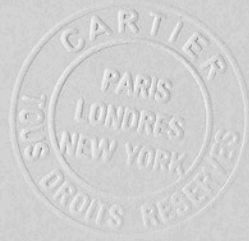






**KEONA**

---



## KEONA



In the beginning, there was an 11.60-carat diamond with a unique colour, a gemmological rarity in weight and colour. This was the inspiration for the design of this ring, which was custom-made to fit the stone. Two triangular diamonds flank it on either side, following an iconic Cartier design that enhances its elongated oval shape. There are several levels to its structure, all set with pavé stones and separated by openwork. This visually stunning, architectural piece allows light to filter in beneath the central diamond, multiplying its mesmerising sparkle.



**AMBERIS**

---



## AMBERIS



**C**oloured diamonds are among the rarest. Cognac-coloured diamonds even more so. The designer created a distinctive setting for this certified gemstone, which weighs an exceptional 7.09 carats. Topped with this fascinating diamond in warm hues, the ring's shank is entirely set with brown diamond cabochons separated by lines of square- and brilliant-cut white diamonds. The overall effect reveals a striking colour harmony that blends with the wearer's skin tone, punctuated with geometric touches.



**AURALIS**

---



## AURALIS



**W**hile pink diamonds are among the most coveted, those from the now-closed Argyle mine in Australia are even more so. Six pear-shaped diamonds from this mine, totalling 1.42 carats, were the inspiration for this ring. Their pear shape and particularly delicate colour influenced the design. Three larger pear-shaped white diamonds, set on one side, create dynamism and an impression of movement. In contrast, their dazzling purity intensifies the pink reflections, creating harmony in this exquisitely refined piece.



**KINKŌ**

—



## KINKŌ

The colour combination of blue and green has been part of the Maison's stylistic repertoire since the early 20th century. Upon discovering these two gems – one green-blue in colour and weighing 1.11 carats, the other green and weighing 0.42 carats – the designer wanted to pay tribute to this signature combination that Louis Cartier called his 'peacock motif'.

This contemporary interpretation of the classic *Toi & Moi* shape has given them an ideal form, with a timeless design enhanced by subtle asymmetry. Clean geometric lines structure the composition, with a raised central section surrounded by cascading diamond pavé elements. The piece exudes powerful visual elegance.





HIGH JEWELLERY COLLECTION

---



**O L O R R A**

Necklace, white gold, emeralds, turquoise, lapis-lazuli, diamonds.



**S O L E N A R A**

Necklace, platinum, emeralds, diamonds.



**T E L L U R A**

Necklace, white gold, diamonds.



**T U T T I K A N Y A**

Necklace, platinum, emeralds, sapphires, rubies, diamonds.

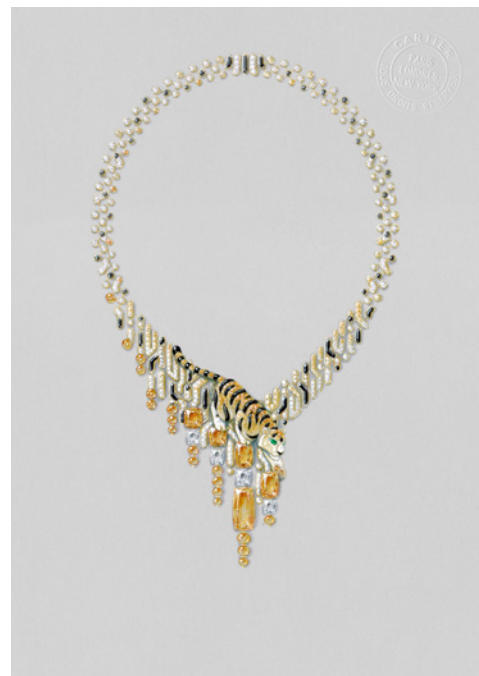
HIGH JEWELLERY COLLECTION

---



**P Y R A**

Earrings/brooches/hair jewels  
white gold, orange diamonds, diamonds.



**H A R Y M A**

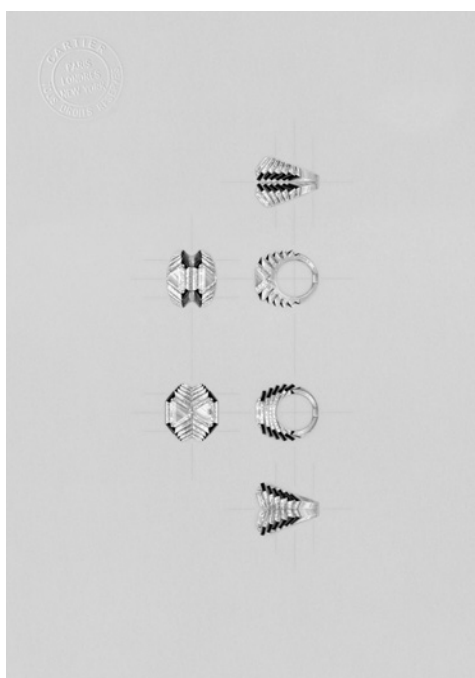
Necklace, yellow gold, topazes, garnets, emeralds,  
onyx, yellow and orange diamonds, diamonds.



**P A N T H È R E K E N T I A**

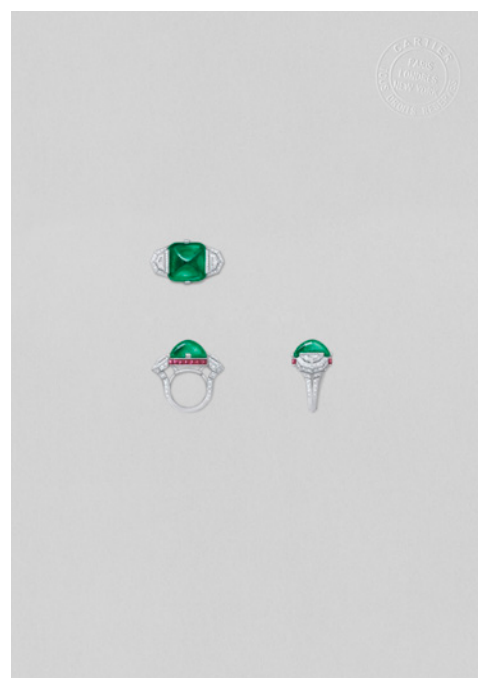
Necklace, white gold, sapphires, emeralds,  
onyx, diamonds.

HIGH JEWELLERY COLLECTION



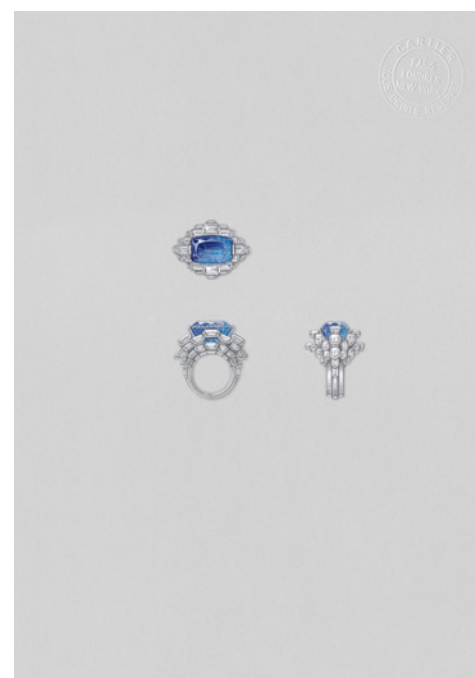
**SPECULA**

Ring, white gold, onyx, diamonds.



**TETRAYA**

Ring, platinum, emerald, rubies, diamonds.



**STRATELIA**

Ring, platinum, sapphire, diamonds.



**TESSELIA**

Ring, platinum, ruby, diamonds.

HIGH JEWELLERY COLLECTION



**KEONA**

Ring, white gold, grey diamond, diamonds.



**AMBERIS**

Ring, white gold, brown-rose diamond,  
brown diamond, diamonds.



**AURALIS**

Ring, platinum, pink diamonds, diamonds.



**KINKŌ**

Ring, platinum, blue-green diamond,  
green diamond, diamonds.



*Cartier*